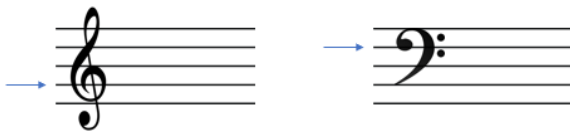


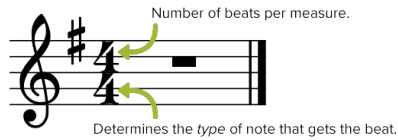
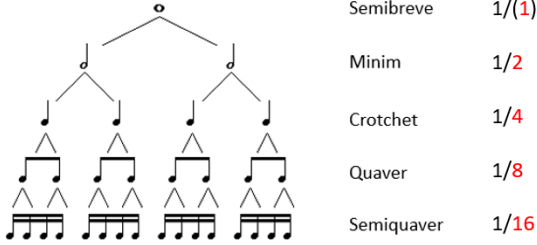
Treble and bass clefs



Treble Clef
G clef

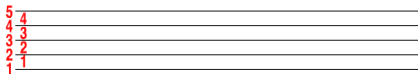
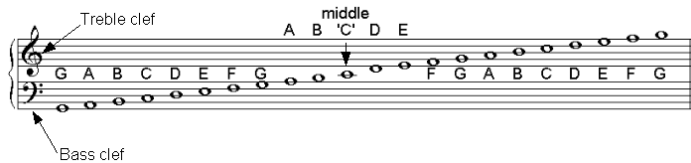
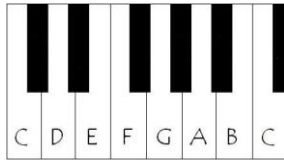
Bass Clef
F clef

Time Signature



4 crotchet beats in a bar

Pitch/Notes



Key points:

- 5 ledger lines, 4 spaces
- Different position for treble and bass clef
- Top and bottom boundary of note head
- Short ledger lines if needed

Stem rules – 3rd ledger line

Notes and Stem Rules

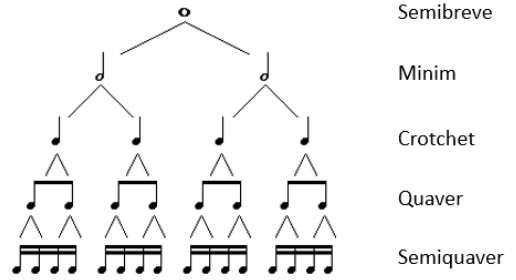


Notes that are BELOW the 3rd line have stems that go UP on the RIGHT

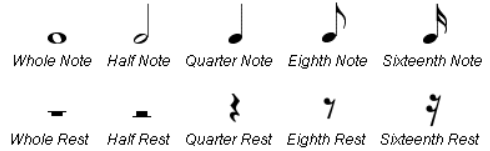


Notes that are ON or ABOVE the 3rd line have stems that go DOWN on the LEFT

Note Division



Relative Rest

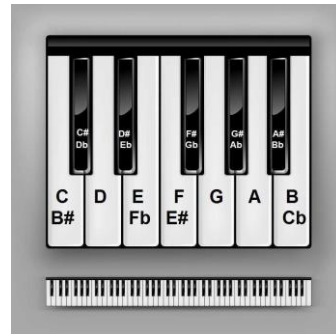
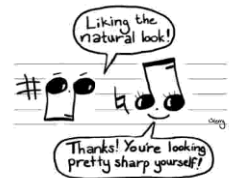
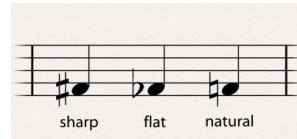


Dotted Notes

ITEM	NOTE	REST	VALUE (number of beats)
Dotted whole note/rest			6
Dotted half note/rest			3
Dotted quarter note/rest			1 1/2
Dotted eighth note/rest			3/4
Dotted sixteenth note/rest			3/8

Sample calculation: Dotted semibreve
4 + 4/2 = 6

Accidentals

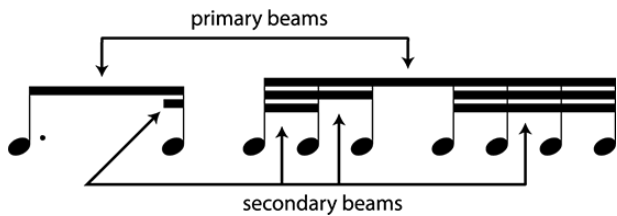
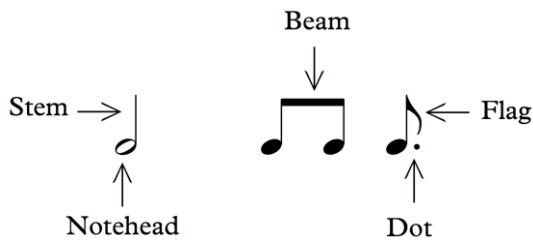


Semitone – 1 note apart
Tone – 2 notes apart

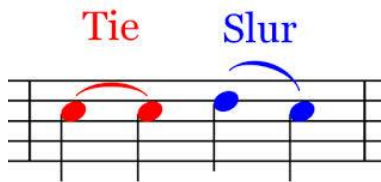
- Sharp (#) – Raise by a semitone
- Flat (b) – Lower by a semitone
- Natural (♮) – Return to the original pitch (cancels the previous accidental)

Notes:
Where to play accidentals
Position of accidentals

Note terminology



Tie vs slur



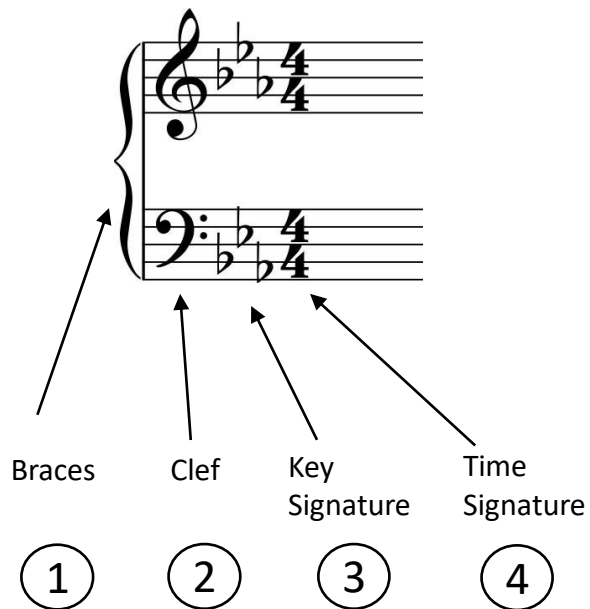
```

    graph TD
      A[I see a curve line!] --> B{Tie/Slur!}
      B --> C{Start and end on the same pitch?}
      C -- No --> D[Slur]
      C -- Yes --> E{Are they side by side?}
      E -- No --> F[Slur]
      E -- Yes --> G[Tie]
    
```



Major keys

- C major – none
- G major – F#
- F major - B \flat



Scales

C major scale

C D E F G A B C

G major scale

G A B C D E F# G

F major scale

F G A B \flat C D E F

Semitones:
3rd and 4th, 7th and 8th

Tonic triad:
1st, 3rd, 5th notes

Minor inherits accidentals of major!
 Harmonic minor: Raised 7th
 Melodic minor: Raised 6,7 ascending. Lower back 6,7 descending.

